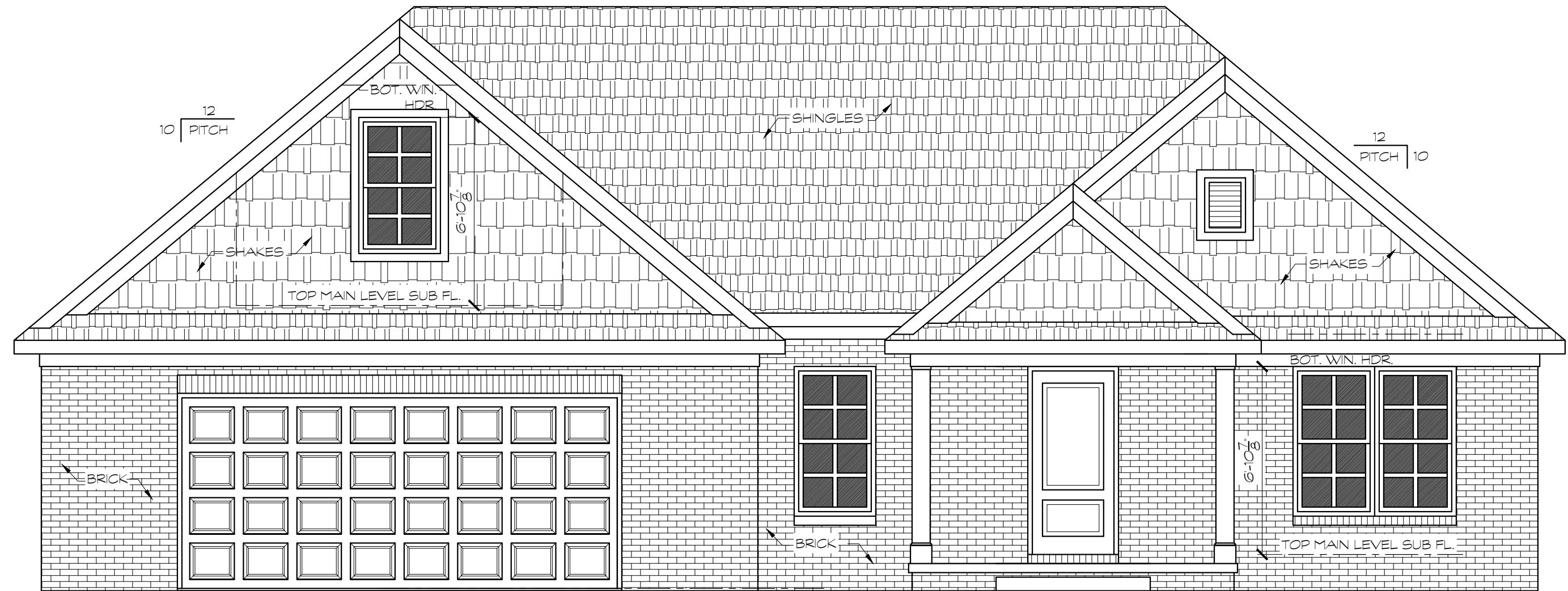
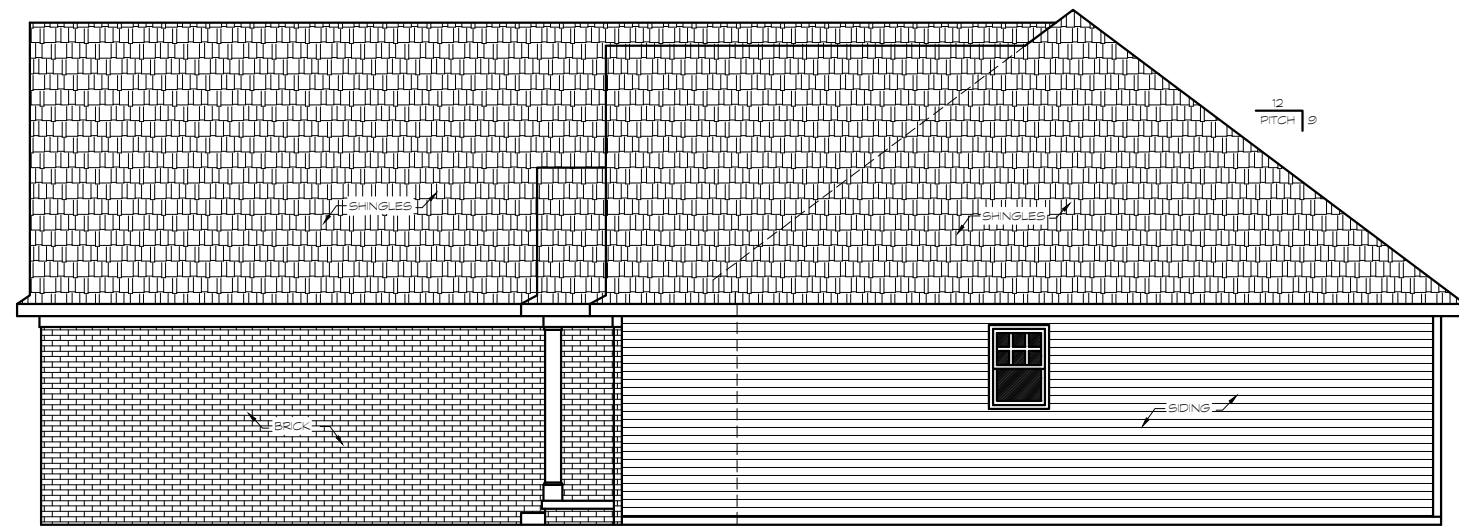


ROOF PLAN
SCALE: 1/8"=1'-0"

- CONSTRUCTION LEGEND**
- * TRUSSES AS DESIGNED AND SPECIFIED BY TRUSS MANUFACTURER
 - * 2x6 ROOF RAFTERS 24" O.C. BRACED PER CODE
 - * GUTTER & DOWNSPOUT LOCATIONS AS PER CONTRACTOR
 - * ROOF VENTS AS PER CONTRACTOR
 - * VERIFY HEEL HGT. W/ CONTRACTOR
 - * SIMPSON BRACING & HURRICANE TIES OR EQUAL TO PROVIDE A POSITIVE CONNECTION BETWEEN TRUSS RAFTER & THE WALL OF THE STRUCTURE TO RESIST WIND & SEISMIC FORCES



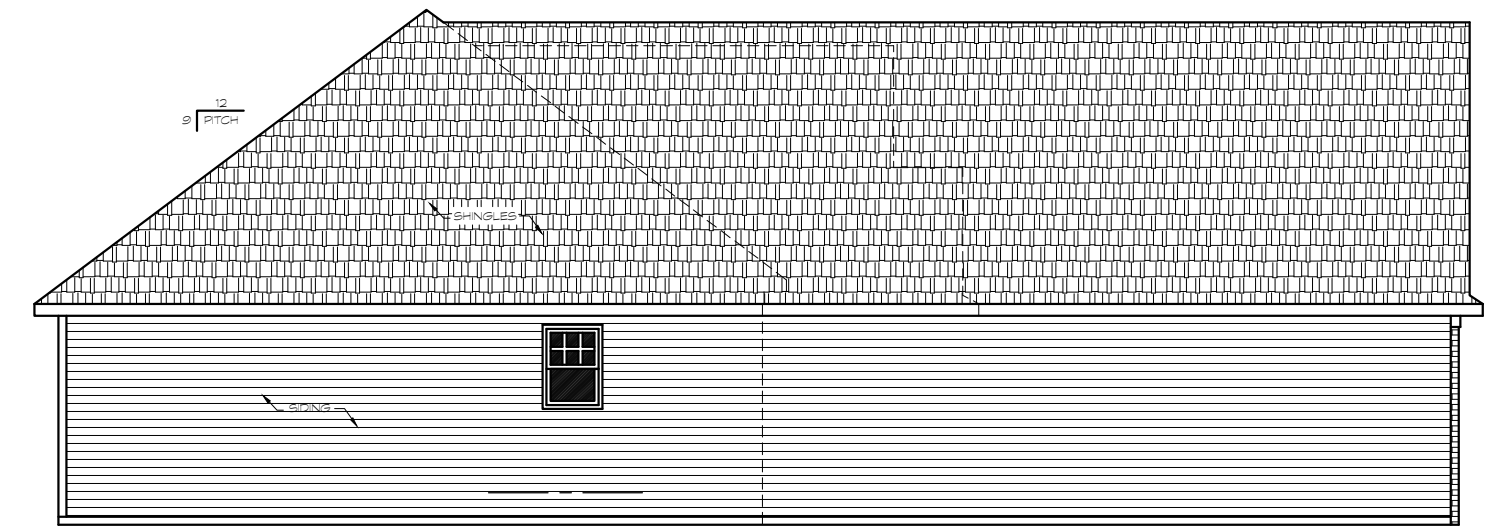
FRONT ELEVATION
SCALE: 1/4"=1'-0"



RIGHT ELEVATION
SCALE: 1/8"=1'-0"



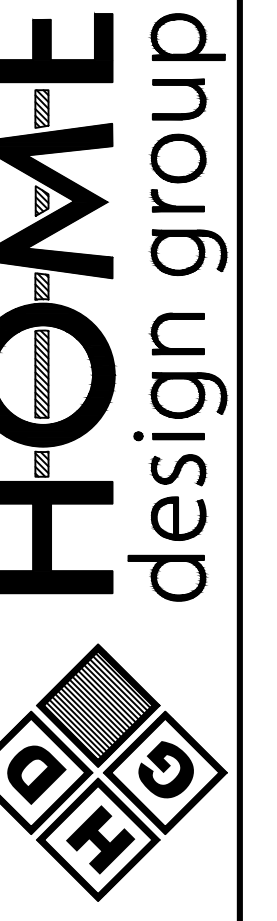
REAR ELEVATION
SCALE: 1/8"=1'-0"



LEFT ELEVATION
SCALE: 1/8"=1'-0"

Drawings & blueprints are intended solely as a floor plan layout & basis for materials. Home Design Group assumes no liability for structural or other errors. Home Design Group is not liable for, nor does it guarantee or control contractor or subcontractor's performance, nor their errors or omissions. Customers should have qualified engineer or architect review construction details.

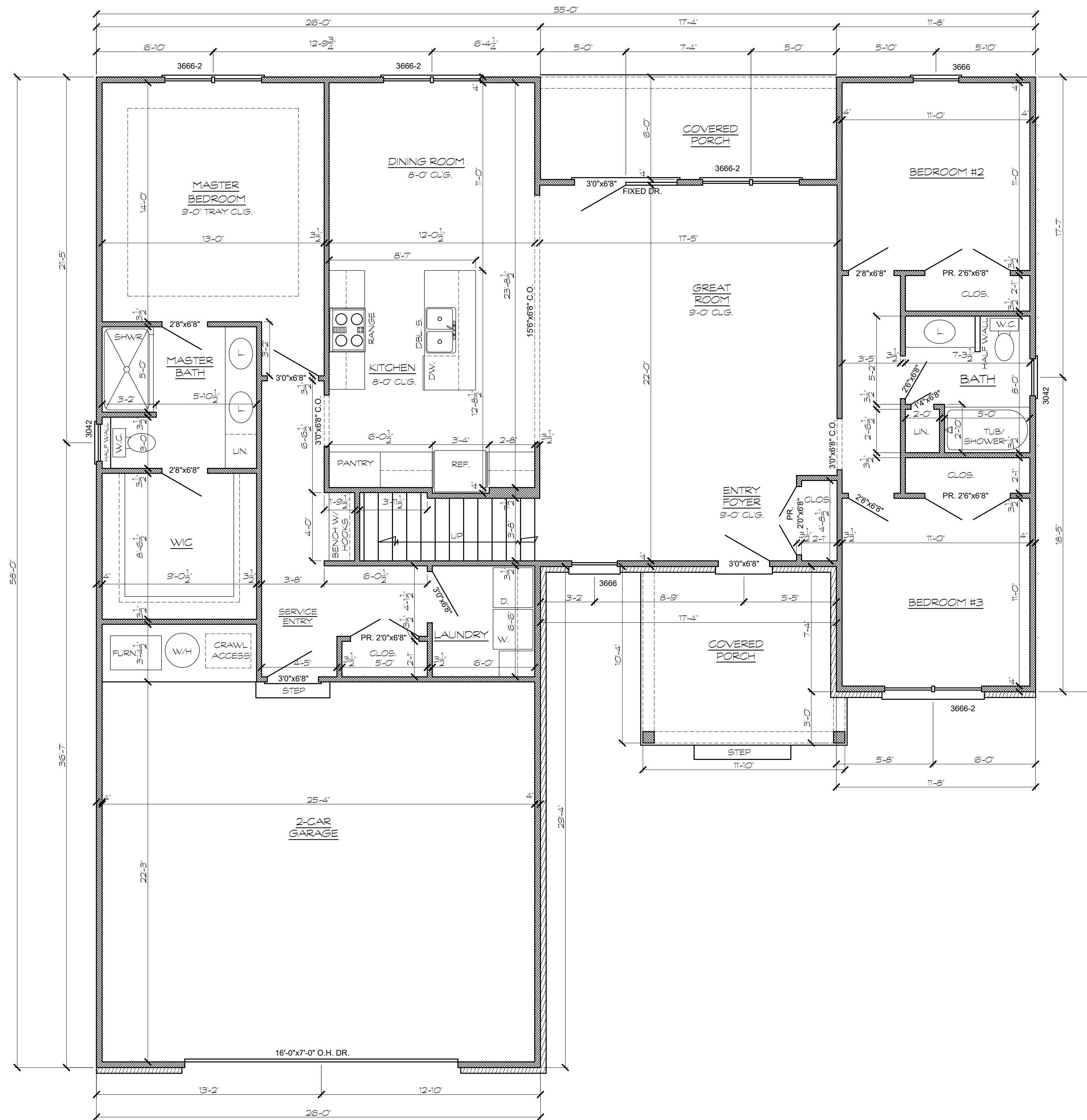
1484 N. GREEN RIVER RD.
EVANSVILLE, IN 47715
Telephone: 812-402-6146
Email: gkissel@hdg-design.com
www.hdg-design.com



- WINDOWS & DOORS
- TRUSSES & ENGINEERED LUMBER
- KITCHEN & BATHS
- MILLWORK
- CLOSETS
- GARAGE DOORS



Designed For:
Chapman Const.-
Adyson w/ Bonus Room
Date: 02-28-25
Plan number 221476



MAIN LEVEL FLOOR PLAN

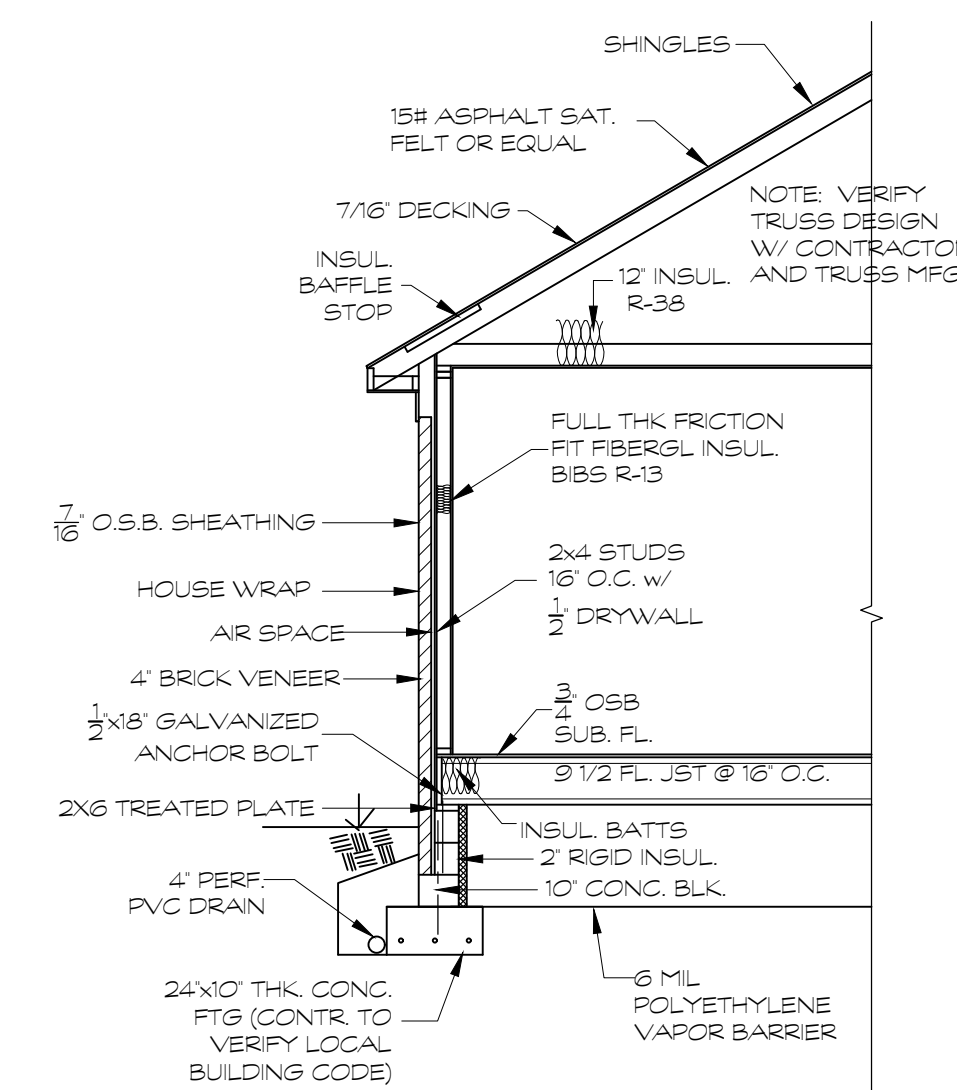
SCALE: 1/4"=1'-0"

CONSTRUCTION LEGEND

- AREA LEGEND
 - MAIN LEVEL: 1716 SQ. FT.
 - BONUS ROOM: 438 SQ. FT.
 - FRONT PORCH: 112 SQ. FT.
 - REAR PORCH: 104 SQ. FT.
 - 2 CAR GARAGE: 635 SQ. FT.
- MATERIALS LEGEND
 - FRAME WALLS
 - STONE VENEER
 - BRICK VENEER

3. GENERAL NOTES

- * 8'0" CEILING HEIGHT UNLESS OTHERWISE NOTED
- * 6'8" DOORS AND CASED OPENINGS HEIGHTS
- * VERIFY WINDOW MANUFACTURER WITH OWNER/CONTRACTOR. WINDOW SIZES ARE SHOWN AS INCHES
- * EXTERIOR DIMENSIONS TO FACE OF SHEATHING
- * INTERIOR DIMENSIONS TO FACE OF STUD WALLS
- * ALL WORK SHALL COMPLY WITH STATE & LOCAL BUILDING CODES & ALL OTHER APPLICABLE REGULATIONS. STATE & LOCAL CODES TAKE PRECEDENCE OVER ANY INFORMATION ON THIS PLAN.
- * CONTRACTOR SHALL BE RESPONSIBLE FOR VERIFYING ALL DIMENSIONS & COORDINATING ALL REQUIRED PERMITS, INSPECTIONS, APPROVALS, ETC.

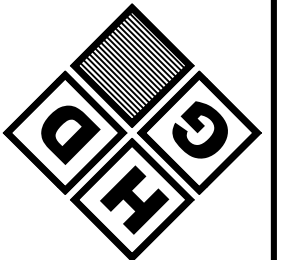
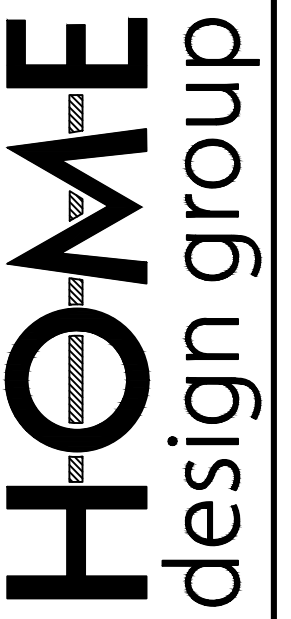


WALL SECTION (TYP.)

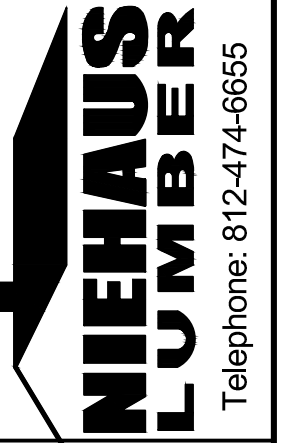
SCALE: 1/4"=1'-0"

Drawings & blueprints are intended solely as a floor plan layout & basis for material estimate. Home Design Group assumes no responsibility for structural or material adequacy of drawings not for compliance with appropriate building codes. Home Design Group is not liable for, nor does it guarantee or warrant, errors or omissions. Customers should have qualified engineer or architect review construction details.

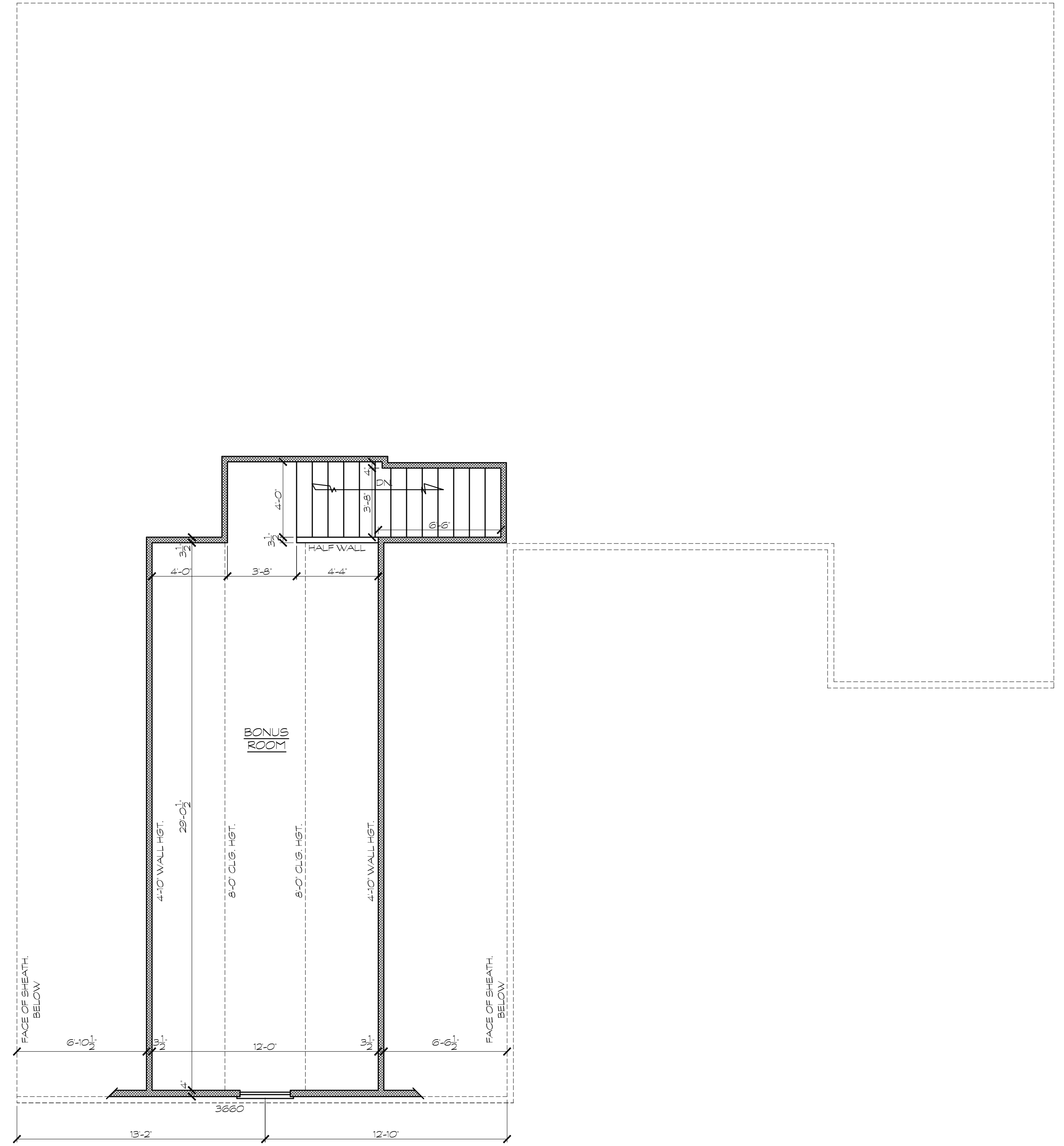
1484 N. GREEN RIVER RD.
EVANSVILLE, IN 47715
Telephone: 812-402-6146
Email: ghissel@hdg-design.com
www.hdg-design.com



- WINDOWS & DOORS
- TRUSSES & ENGINEERED LUMBER
- KITCHEN & BATHS
- MILLWORK
- CLOSETS
- GARAGE DOORS



Designed For:
Chapman Const.-
Adyson w/ Bonus Room
Date: 02-28-25
Plan number 221476



1. MATERIALS LEGEND
- FRAME WALLS
 - STONE VENEER
 - BRICK VENEER

2. GENERAL NOTES
- * 8'0" CEILING HEIGHT UNLESS OTHERWISE NOTED
 - * 6'8" DOORS AND CASED OPENINGS HEIGHTS
 - * EXTERIOR DIMENSIONS TO FACE OF SHEATHING
 - * INTERIOR DIMENSIONS TO FACE OF STUD WALLS

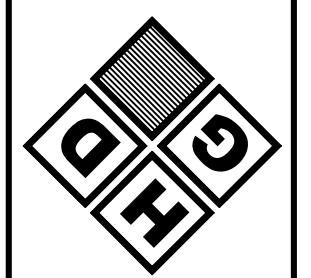
MAIN LEVEL FLOOR PLAN

SCALE: 1/4"=1'-0"

Designed For:
 Chapman Const.-
 Adyson w/ Bonus Room
 Date: 02-28-25
 Plan number 221476

NIEHAUS LUMBER
 Telephone: 812-474-6655

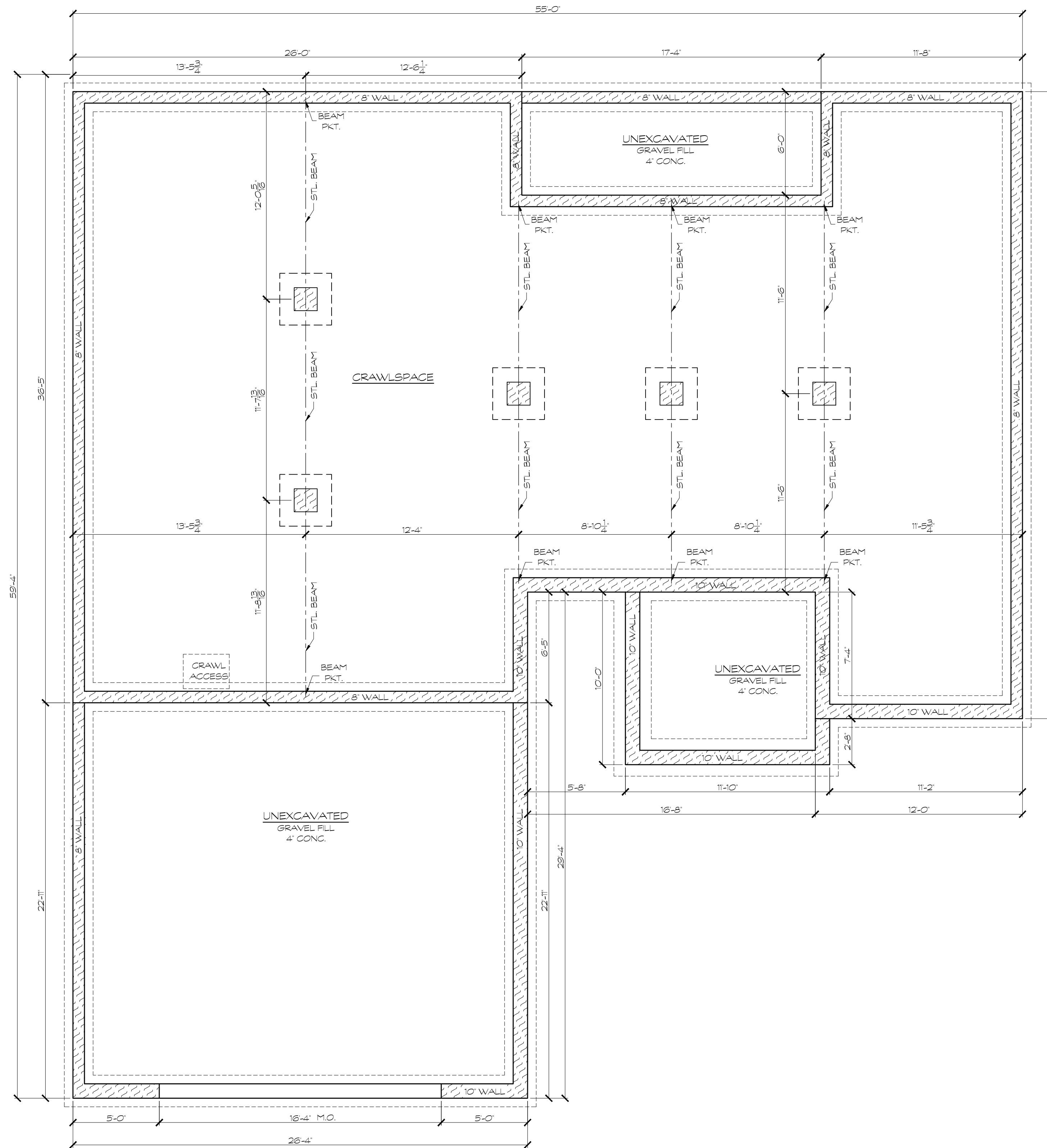
- WINDOWS & DOORS
- TRUSSES & ENGINEERED LUMBER
- KITCHEN & BATHS
- MILLWORK
- CLOSETS
- GARAGE DOORS



HOME
 design group

1484 N. GREEN RIVER RD.
 EVANSVILLE, IN 47715
 Telephone: 812-402-6146
 Email: ghissel@hdg-design.com
 www.hdg-design.com

Drawings & blueprints are intended solely as a floor plan layout & basis for material estimate. Home Design Group assumes no responsibility for structural or material adequacy of drawings not for compliance with appropriate building codes. Home Design Group is not liable for, nor does it guarantee or warrant, any errors or omissions. Customers should have qualified engineer or architect review construction details.



CONSTRUCTION LEGEND

MATERIALS LEGEND

- CONCRETE WALLS
- CONCRETE BLOCK WALLS
- FRAME WALLS

GENERAL NOTES

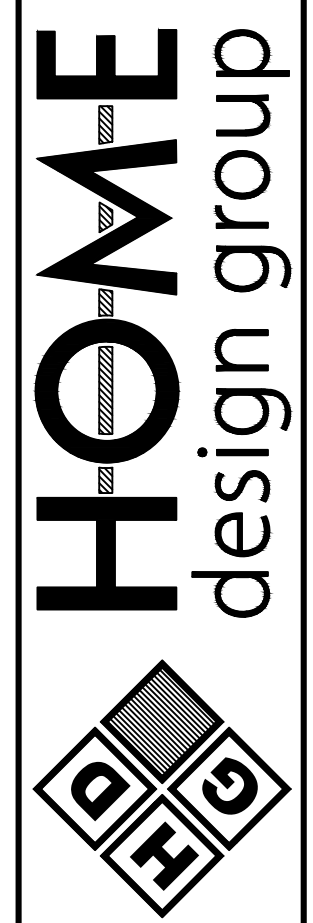
1. EXTERIOR DIMENSIONS TO FACE OF CMU WALLS
2. 10' CMU WALL W/ 4' BRICK LEDGE
3. 20'x10' CONC. FTGS. (CONTRACTOR TO VERIFY PER BUILDING CODE)
4. CRAWL ACCESS AS PER CONTR.

FOUNDATION/BASEMENT PLAN

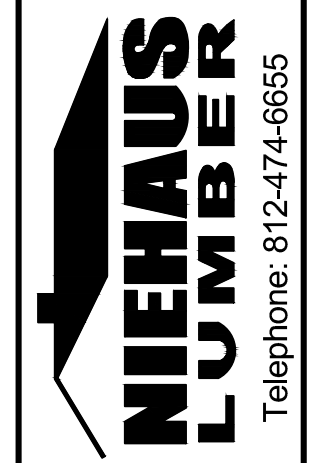
SCALE: 1/4"=1'-0"

Drawings & blueprints are intended solely as a floor plan layout & basis for material estimate. Home Design Group assumes no responsibility for structural or material adequacy of drawings nor for compliance with appropriate building codes. Home Design Group is not liable for, nor does it guarantee or control contractor or subcontractor's performance, nor their engineer or architect review construction details.

1484 N. GREEN RIVER RD.
EVANSVILLE, IN 47715
Telephone: 812-402-6146
Email: gkissel@hdg-design.com
www.hdg-design.com



- WINDOWS & DOORS
- TRUSSES & ENGINEERED LUMBER
- KITCHEN & BATHS
- MILLWORK
- CLOSETS
- GARAGE DOORS



Designed For:
Chapman Const.-
Adyson w/ Bonus Room
Date: 02-28-25
Plan number 221476